

# PRINCE2® 7 and AI project management

PeopleCert

myAXELOS

# Speaker



## **Andy Murray**

Executive Director  
Major Projects Association

# A reminder on PRINCE2



# What is PRINCE2?

A structured method for managing projects that is flexible, adaptable, and tailorable

It can be applied to any project, regardless of the purpose, scale, type, organization, geography, or culture





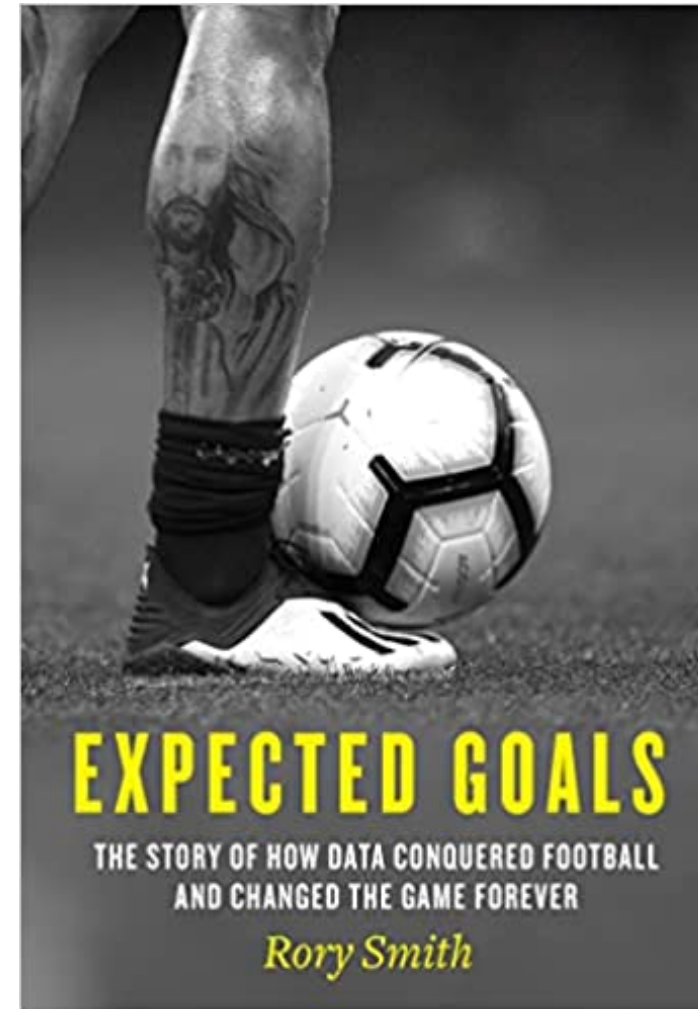
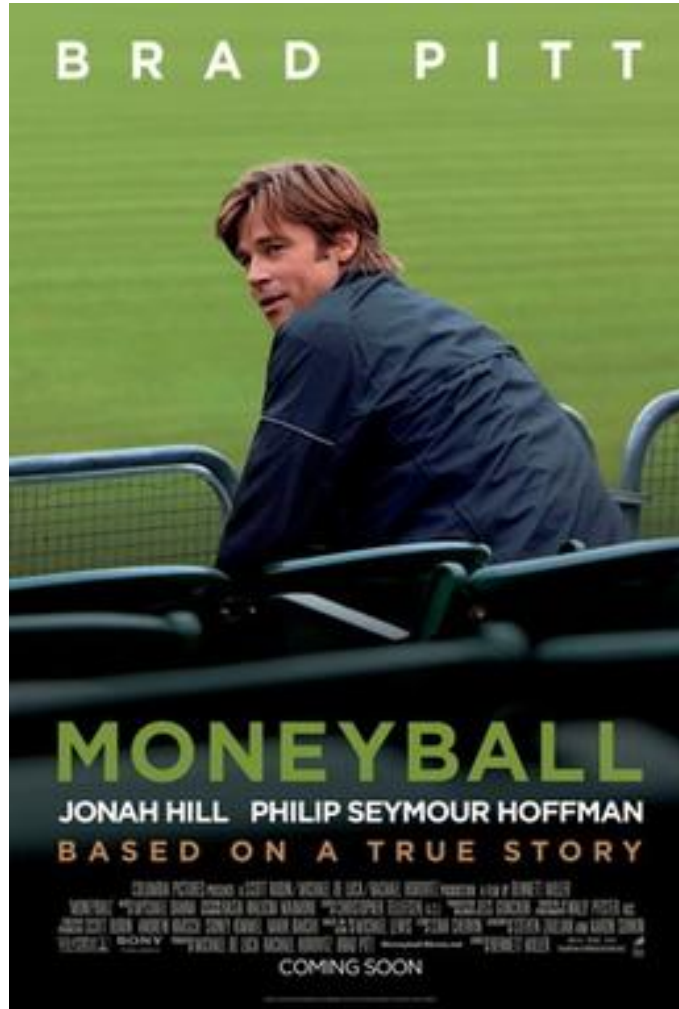
# AI and data analytics



# Data analytics isn't new



# And data analytics is a literal game changer





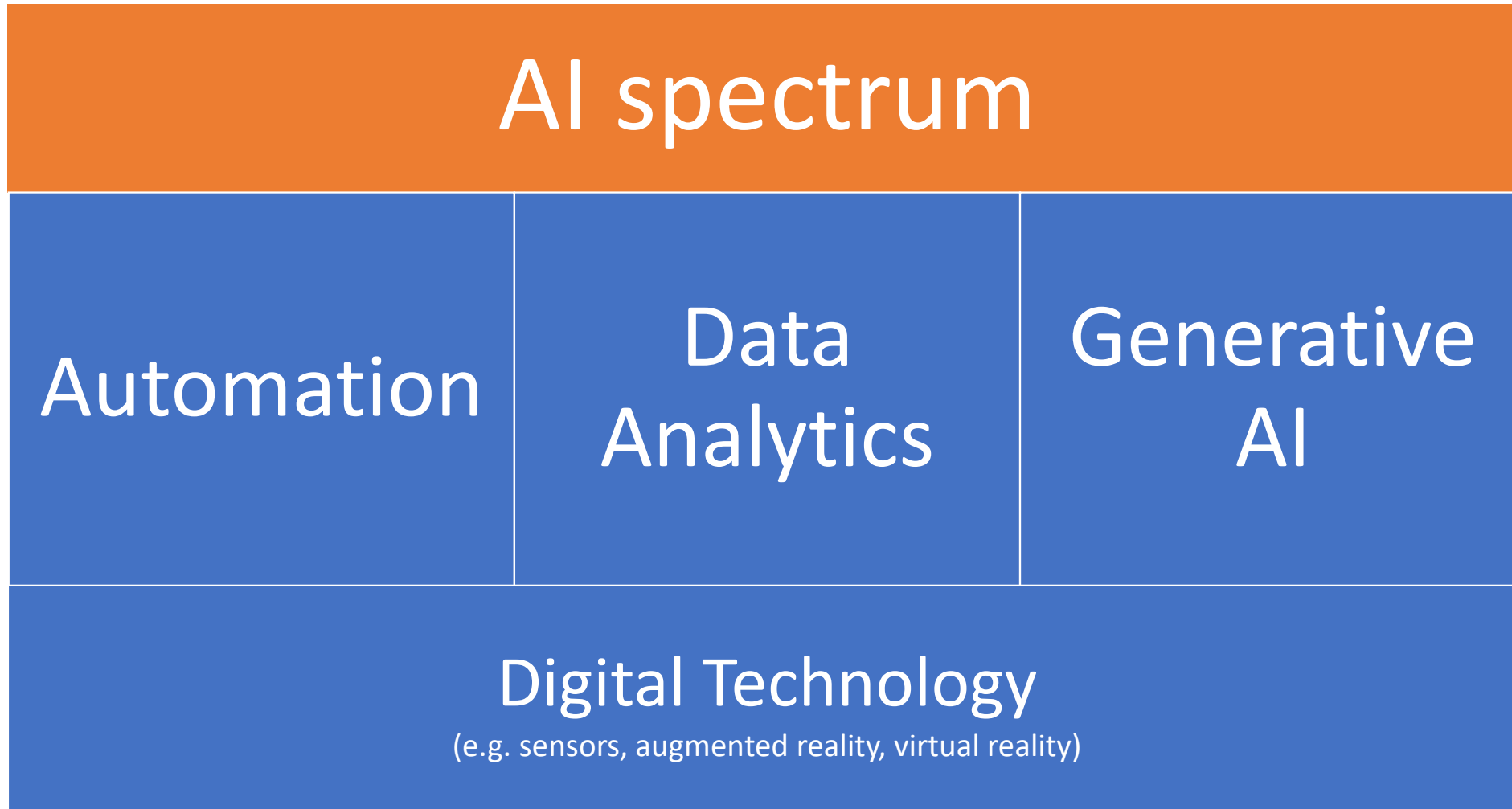
# The 'project' game hasn't changed over the past 60 years



# And neither has delivery performance



# Applying to the “AI” spectrum to projects



# How PRINCE2 is AI ready



# Digital and data

- Data analytics and the broader use of digital technologies and AI will transform how we manage projects.
- PRINCE2 7th Edition is 'AI ready' enabling its use through a requirement for a digital and data management approach for the project.
- The digital and data management approach is integrated in the method through the PRINCE2 practices, processes, principles and people.

# Digital

What digital technology will the project need?

Consider the automation and facilitation of project management activities and any specialist technology required to support the specialist project work.

In some cases, this may involve the use of systems already established by the business and suppliers.

In other cases, different or additional systems may be needed.



# Data

- What data or information is needed or will be created?
- Where will the data come from?
- Where will the data be held?
- How will the data be kept secure?
- What level of privacy is required?
- How the data or information will be analysed, curated, and presented?
- Who will have access or rights? How integrity will be ensured?
- How will data quality be assured?
- What will happen to the data after the project completes?



# Using AI/data example – “People” element

People			
Automation	Data Analytics and visualisation	Generative AI / LLMs	Digital technology / other
Consultation (collation)	Consultation (sense making)	Identifying stakeholders	Support for hybrid working
On-boarding and off-boarding	Sentiment analysis of stakeholders across the project ecosystem and organizational ecosystem (engagement)	Generating the draft communications management approach and the change management approach.	AR/VR simulation of project product or project plan (engagement)
Responding to enquiries or FAQs through a project chatbot	Network analysis (of relationships)	Generating communications content	



And remember!

Managing projects  
without data isn't  
project management.

It's just winging it.



PeopleCert

Thank you!

